



110/112 Lansdowne Place, Hove, BN3 1FJ

£1,150

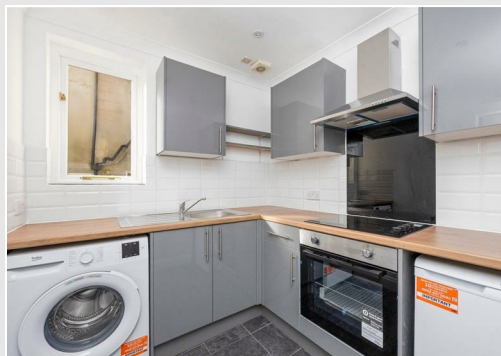


- Newly refurbished
- Central Location
- Unfurnished
- Gas Central Heating

- First Floor
- Available Now
- New carpets throughout
- Close to Hove Seafront

110/112 Lansdowne Place, Hove, BN3 1FJ

£1,150



Summary

RECENTLY REFURBISHED ONE BEDROOM UNFURNISHED FLAT IN CENTRAL HOVE.

Nestled in the heart of Hove, this charming one-bedroom flat in Lansdowne Place offers a delightful blend of modern comfort and convenience. Recently refurbished, the property boasts newly carpeted floors and fresh paint throughout, creating a bright and inviting atmosphere.

The flat features a well-appointed reception room, perfect for relaxation or entertaining guests. The newly installed kitchen is both stylish and functional, providing an ideal space. The double bedroom is a cosy retreat, ensuring a good space for a single occupant or couple.

Situated in a central location, residents will enjoy easy access to a variety of local amenities, including shops, cafes, and public transport links, making it an excellent choice for those seeking a vibrant lifestyle. Additionally, the property is chain-free, allowing for a smooth and straightforward purchasing process.

Lounge

Good size lounge with new grey carpet and large east facing sash window

Kitchen

Newly fitted light grey Hi Gloss kitchen with built in cooker, hob and extractor fan. Freestanding undercounter fridge and washing machine. Ceramic tiled flooring

Bedroom

Double bedroom with east facing window and new grey carpets

Bathroom

Large bathroom with WC, wash hand basin, towel rail, bath with over head electric shower.

Energy Efficiency Rating		
	Current	Potential
Very energy efficient - lower running costs		
(92 plus) A		
(81-91) B		
(69-80) C		
(55-68) D		
(39-54) E		
(21-38) F		
(1-20) G		
Not energy efficient - higher running costs		
England & Wales	EU Directive 2002/91/EC	

